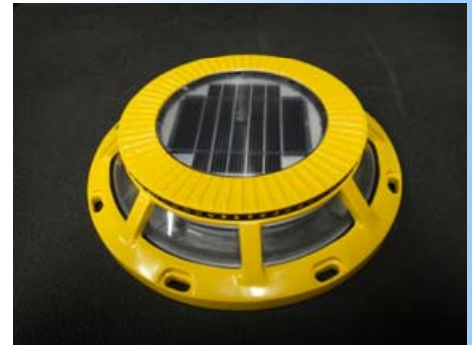


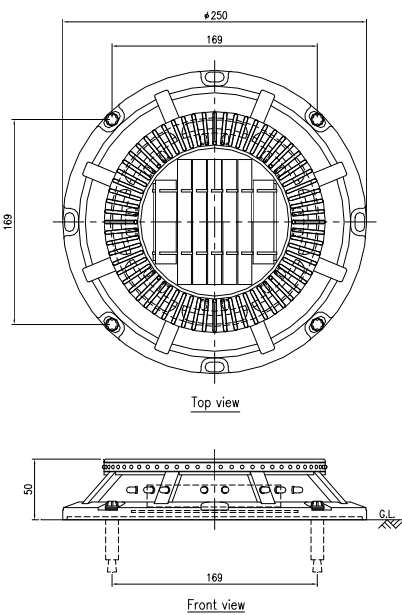
# JISLON® Island Flash



- 360 degrees flashing with 16pcs of LED can be fitted in all kinds of traffic intersection.
- Changing the speed of flashing by sensor detects a vehicle's headlight gives attention to not only drivers but also pedestrians more quickly.
- Optical design lens gets the brightness of led maximize within limited power consumption.
- The reflective glass elements assist the LEDs to provide optimum visibility at night.
- Island Flash is easy to install without any electronic wiring works.



## Specifications



Item		Specifications
Solar module	Type	Silicone crystalline
	Peak power	1.09W
	Suitable voltage	3.3V
	Suitable current	330mA
Battery	Type	Electric double layer capacitor
	Typical voltage	2.3V
	Capacity	500F
LEDs	Type	High intensity light emitting diode
	Colour	Yellow
	Nos. of LEDs	16pcs
	16pcs of LED is allocated at equal spaces on 360 degrees direction	
Operation	Operation	Start flashing automatically under 100-800LX.
	Flashing times / minutes	Start flashing automatically after dark at 120 times per minute. The speed changes to 600 times per minute for 15 seconds when the photosensor detects a vehicle's headlight.
Reflector	Type	Glass beads
	Colour	Yellow
Body	Body	Aluminium Alloy (ADC6)
	Housing	Polycarbonate
Size		φ250mm x H50mm
Weight		1800g
Product use temperature range		- 20 + 60 deg C

## Characteristics



Optical design lens



Sensor system



Glass beads



Antislip finish