

- With the original optical design, the polycarbonate lens gives high visibility from 360 degrees and ensure pedestrians' or bicyclists' safety at night time.
- Depends on application, JISLON Eco-Stud can propose the replaceable model and the fixed model.

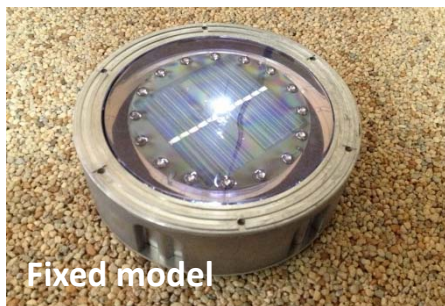
**Replaceable model** saves a lot of time for re-installation works after lifetime passed.

**Fixed model** avoid vandalism.

- 16pcs of **SWALEFLEX glass beads** is not only for urban design as architecture use but also giving more visibility at night time.
- JISLON Eco-Stud was designed for “**environment-friendly**”. It can be **completely disassembled** and **segregates wastes**.



Replaceable model



Fixed model



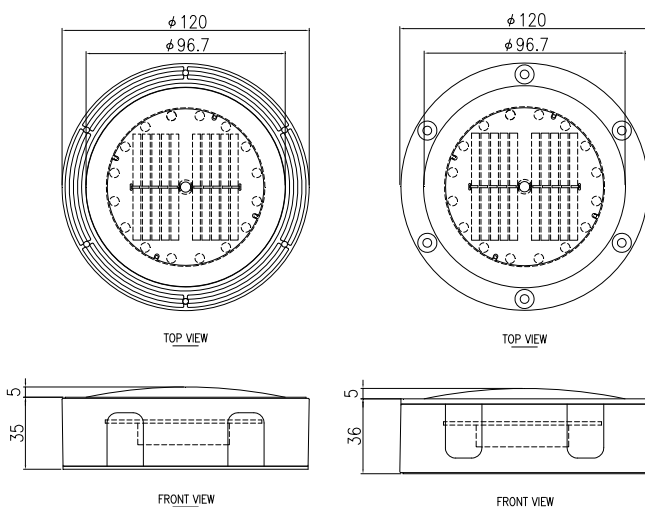
Replace in a few minutes with special key



Completely disassembled in parts for environment-friendly

Available both replaceable model and fixed model

## Specifications

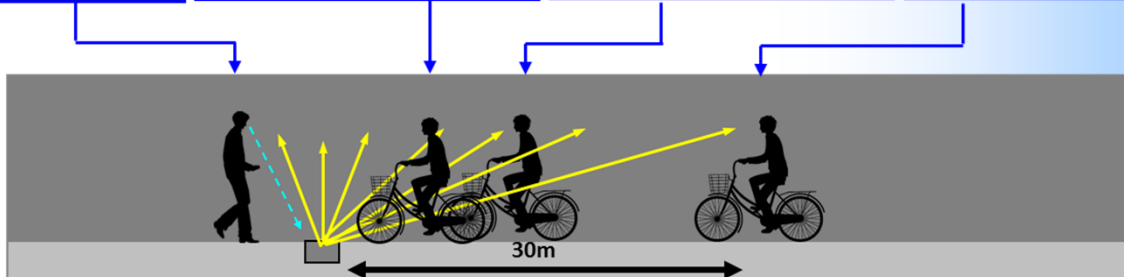
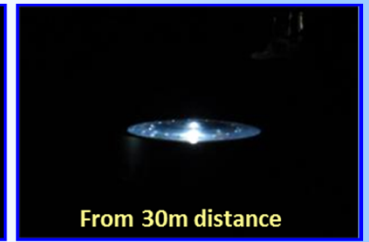
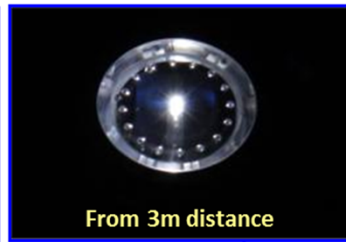
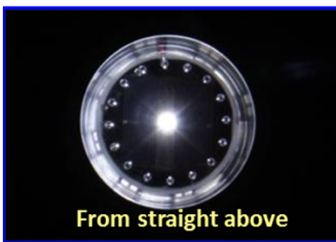


Item	Eco-Stud	
Solar module	Type	Silicone crystalline
	Peak power	0.27W
	Suitable voltage	4.7V(2.35 x 2pc)
Battery	Suitable current	57mA
	Type	Nickel Metal Hydride
	Typical voltage	3.6V(1.2V x 3pc)
	Capacity	500mAh
LED	Type	High intensity light emitting diode
	Colour	White
	Nr. of LED	1pc
Operation	Flashing times/second	Start flashing automatically after dark 56+/- 5 times / second
Body	Housing	Aluminum Alloy
	Cover Lens	Polycarbonate
Size	Fixed model	Φ120 x H40
	Replaceable model	Φ120 x H41
Weight	Fixed model	520g
	Replaceable model	560g
Product use temperature range	-20~+60degrees	

## Concept



- JISLON Eco-Stud was designed for pedestrian or bicycle lane. It gives same visibility from 30meter away till the product.
- Almost flat surface design is considered the slip or falling of pedestrians or bicyclists.



## Quality Control

All Jislon products are introduced into the market after many kind of test results in R&D center.

For example, quality level for water proof is one of the biggest issues for electronic road stud products. Heat shock test, freeze-thaw test or water immersion test etc is always done during the process of development.

Load test is also done as one of important tests. With the flying wheel machine, we can check the durability against repetitious forces from vehicle.

